

# Water New Zealand Conference & Expo

18 October 2022

*Liz Brown, Te Rūnanga o Ngāi Tahu*

*Councillor Craig Pauling, Environment Canterbury*

# *Whakaora Te Waihora*

## *A Co-Governance Story*



# *Te Kete Ika a Rākaihautū / Te Waihora*



# *Te Waihora*

## *Taonga on our Doorstep*

- **Culturally significant** to Ngāi Tahu as a tribal taonga and a major mahinga kai
- **Nationally ecologically significant** for its aquatic and wetland ecosystems, over 40,000 birds, range of habitats, rare and endemic species
- **Internationally ecologically significant**, large habitat on the East Asian – Australasian Flyway
- **Economically significant** fisheries



## *Te Kete Ika a Rākaihautū*



## *“Ko Taku Kāika Ko Orariki”*



# A loss of control

- European settlement from **1830s**
- Kemp's Purchase **1848**
- **1865** – drainage works start for agricultural development, dire impacts on water quality and mahinga kai
- Ngāi Tahu petitions start in regard to drainage and loss of mahinga kai
- **The full story:**  
[tewaihora.org/about-the-lake/history](http://tewaihora.org/about-the-lake/history)



# Te Waihora Joint Management Plan

Mahere Tukutahi o Te Waihora

## Picking up the pieces

- Ngāi Tahu Land Report, Wai 27 (Waitangi Tribunal, **1991**)
- Ngāi Tahu Claims Settlement Act **1998** – lake bed agreement
- Te Waihora Joint Management Plan between Te Rūnanga o Ngāi Tahu and the Department of Conservation (**2005**) for enhancement and protection of Te Waihora, includes policies for addressing water quality issues



Department of Conservation  
Te Papa Atawhai



Te Rūnanga o NGĀI TAHU



## *Collaboration via a co-ordinated approach*

- Tuia relationship agreement
- Joint commitment to restore mauri and ecosystem health of Te Waihora



## *Key Dates*

- **2011** Relationship initiated, interim co-governance agreements
- **2012** Co-governance agreement signed
- **2014** Selwyn District Council joins
- **2016** Christchurch City Council joins
- **2019** Department of Conservation joins





# *Moemoeā*

## *Our Vision*

*To restore and rejuvenate the mana, mauri and ecosystem health of Te Waihora and its catchment.*

## *Whakaora Te Waihora programme*



- Operational programme to restore Te Waihora
- Multiple projects funded and/or delivered by the programme
- In partnership with others



## Whakaora Te Waihora aims

- Accelerate restoration of ecosystem health
- Restore and enhance cultural sites, mahinga kai
- Protect and restore wetland and riparian habitats, indigenous vegetation, wildlife
- Improve lake and catchment management practices
- Establish robust monitoring, investigations programme



## *Whakaora Te Waihora Phase 1 (2012-2017)*

- Funded by MfE Fresh Start for Freshwater, Environment Canterbury and Te Rūnanga o Ngāi Tahu
- Purpose to establish the programme and initiate works towards achieving the aims



# Whakaora Te Waihora Phase 1 Achievements

## Legend

### Biodiversity

- = Planting
- = Te Repo Orariki (Taumutu Wetlands)
- = Willow and weed control
- = Possum monitoring and control

### Science

- = Wave barrier and artificial islands
- = Planted macrophytes
- = In-lake nutrient processing research/ upgraded nutrient model for the lake
- = Fisheries management research
- = Investigation into lake opening options
- = Investigation into nutrient attenuation
- = Water sampling sites
- = Automated water monitoring system
- = Fish habitat survey of the Halswell/Huritini River and Ahuriri Lagoon
- = Canterbury mudfish habitat survey

### Extension

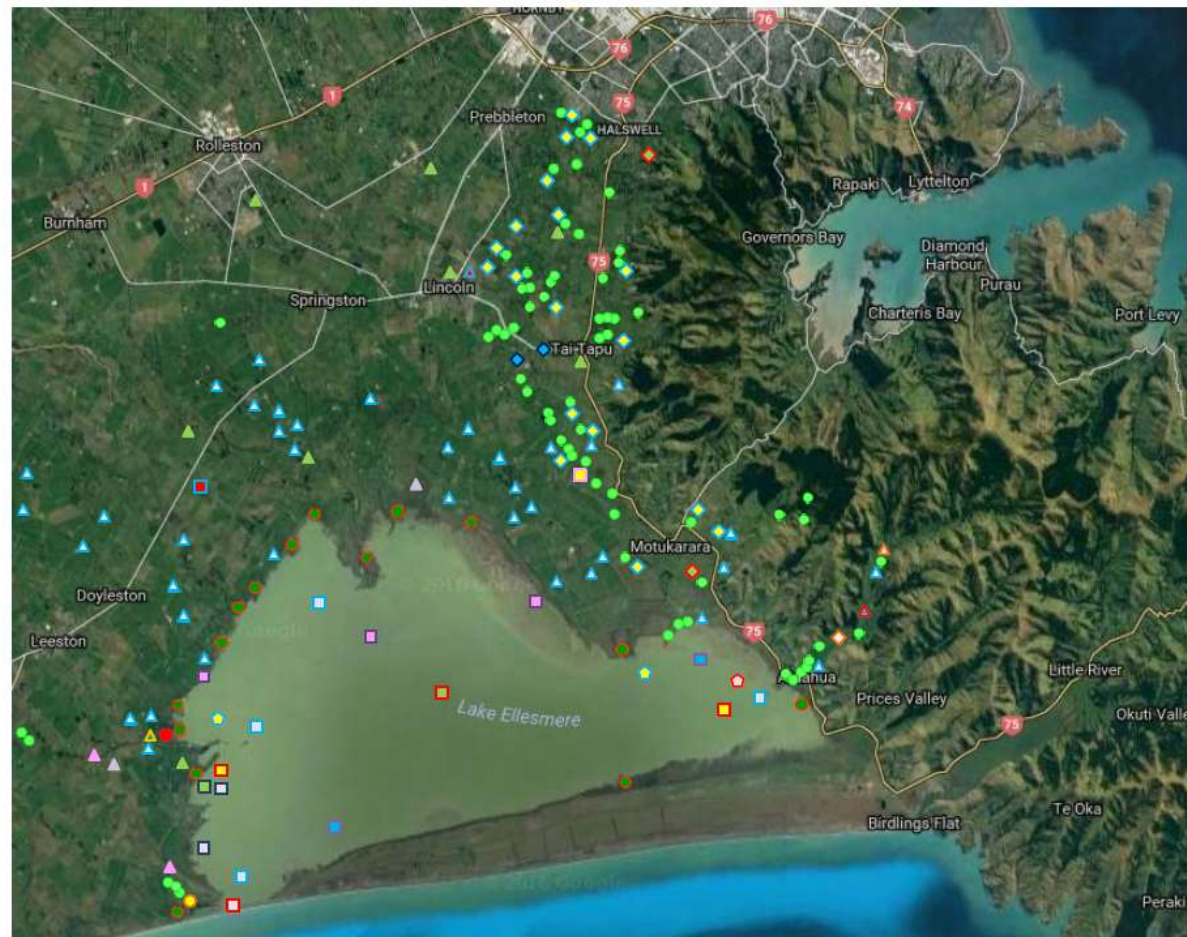
- ▲ = Kids Discovery Plant-out site
- ▲ = Farm Environmental Plan
- ▲ = Farm Environmental Plan workshops
- ▲ = Phosphorus and Sediment Field-Day
- ▲ = Support for COMAR monitoring and analysis
- ▲ = Draft Kaituna Catchment Management Strategy
- ▲ = Support for Hart's Creek video
- ▲ = Streamwalk

### Cultural

- = Cultural monitoring of mahinga kai
- = Investigations into mahinga kai bio-health

### Engineering

- ◆ = Re-battering of waterway
- ◆ = Works on river banks to reduce erosion
- ◆ = Investigation into the sediment sources in the Halswell/Huritini River
- ◆ = Designs for two riffles on the Halswell/Huritini River



## *Kids Discovery Plant-Out*

- Delivered by Te Ara Kākāriki and Enviroschools
- Planting days with local schools to learn about water, ecology, and Ngāi Tahu cultural values





## *Regulatory intervention*

- Selwyn Te Waihora Water Plan
- Developed by the local water zone committee with mana whenua representation
- Strict nitrogen leaching rules – further reductions coming soon
- Cultural Landscape Values Management Area – a unique set of rules to protect Te Waihora



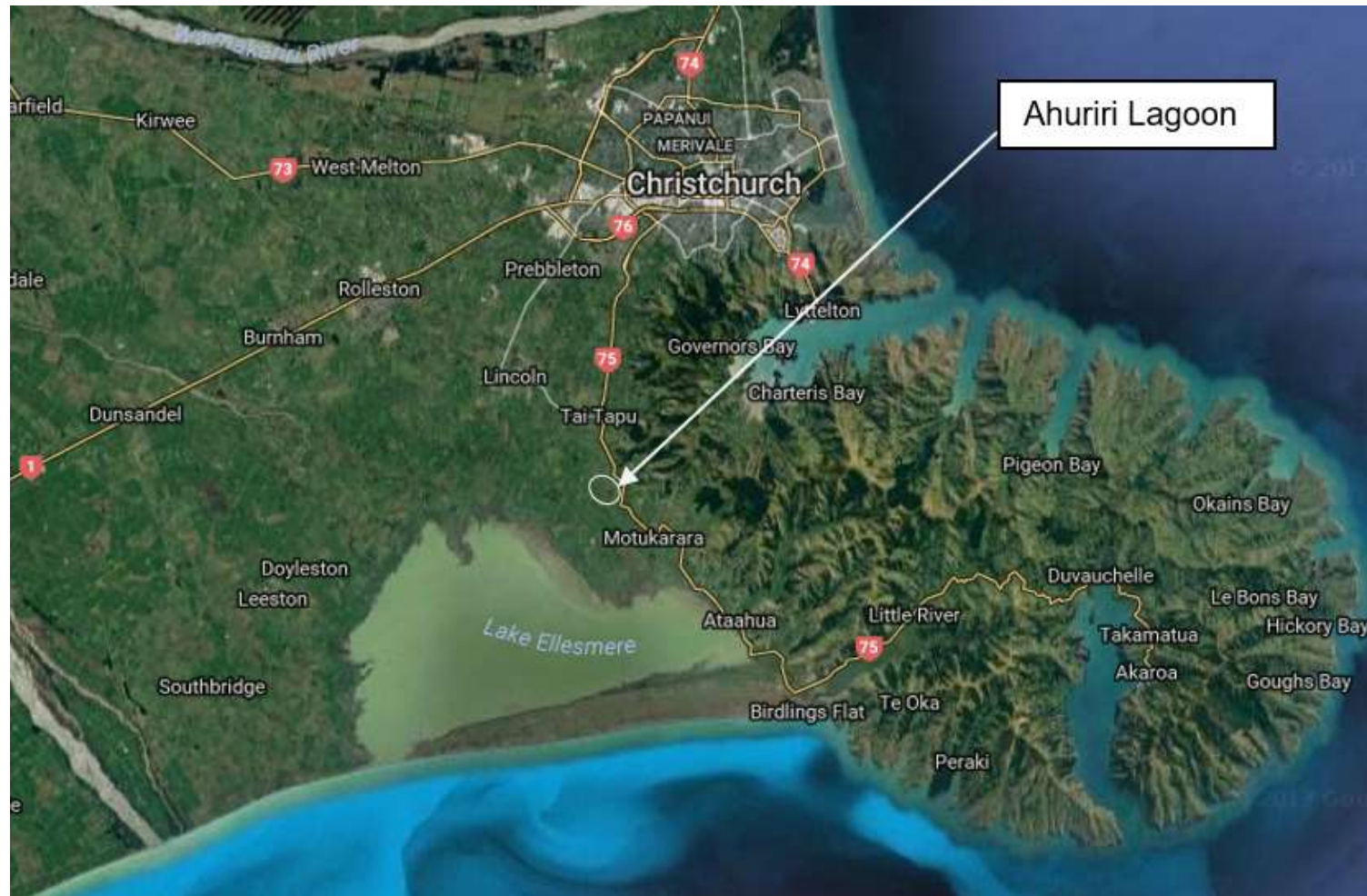


## *Whakaora Te Waihora Phase 2 (2017-2027)*

- Build on previous achievements, work towards the vision
- DOC projects eg Weed Strikeforce



## Whakaora Te Ahuriri



## Ahuriri Lagoon

- Once a significant mahinga kai
- Wetlands drained for farming - 19<sup>th</sup> century
- Environment Canterbury endowment land
- Strong desire from the community to restore the site
- Mana whenua driven, community supported, Council facilitated, Crown funded



# Whakaora Te Ahuriri objectives



Develop a constructed wetland to improve:

- Water quality
- Mahinga kai values
- Biodiversity values

*...and deliver to best practice standards*



# Whakaora Te Ahuriri

- Mātauranga Māori monitoring programme
- Water quality monitoring





# Whakaora Te Waikēkēwai

- Partnership led by Te Taumutu Rūnanga, co-managed with Environment Canterbury
- Restoration of Te Waikēkēwai, a culturally significant waterway
- **Phase 1:** Wetland restoration (Te Repo Orariki), riparian planting
- **Phase 2:** \$4.16m FIF and Environment Canterbury funded project to restore the rest of the stream



## *Community collaboration*

- Whakakōhanga Kōrero is a forum of the various organisations delivering projects to restore Te Waihora
- Purpose to work together in order to be more strategic and effective in this restoration work



## ***Imagine ... The Future***

*There is much more to do (we need a lot more wetland areas restored) ...*

**... and we must be innovative, tapping into new funding sources (private as well as public)**

*We have a vision and a long-term strategy ...*

**... involving several flagship projects**

*Phosphorus recovery and a wetland / mahinga kai park are key  
Potential for economic benefit, climate change action (blue carbon)*





## A new dawn

### *Patai/questions?*

Visit our new website at  
[www.tewaihora.org](http://www.tewaihora.org)





*Mō tātou, ā, mō kā uri ā muri ake nei*

*For us and our children after us.*

*tewaihora.org*